

# Solve Fix Assembly Instructions

## Missed a Rafter?

Never worry about drilling a hole in the wrong place again. Simply gather the items used to make a SolVe Mount and make a SolVe Fix instead, add a standard M10 coach bolt from any good hardware store, and assemble your SolVe Fix in minutes.

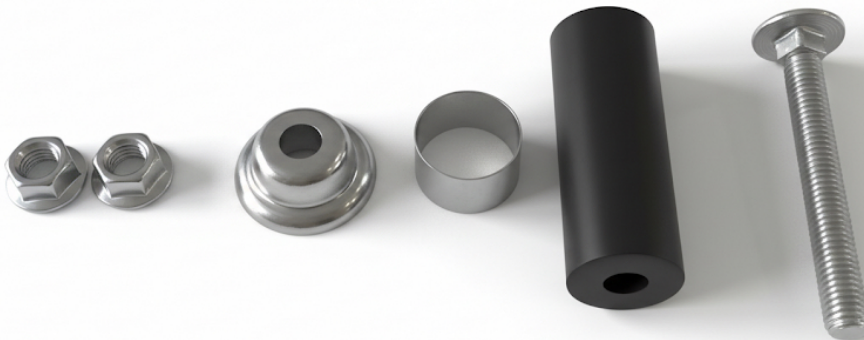
Create a fully waterproof IPx8-rated seal that outlasts the roof covering—just by tightening a nut. No sealants, flashing, or tile replacements required.

## You'll Need:

- 1 x M10 Coach Bolt (80-100mm) - available from all good hardware stores
- 1 x SolVe Seal
- 1 x SolVe Collar
- 1 x SolVe Cap
- 2 x Flange nuts (lock them against each other once installed)

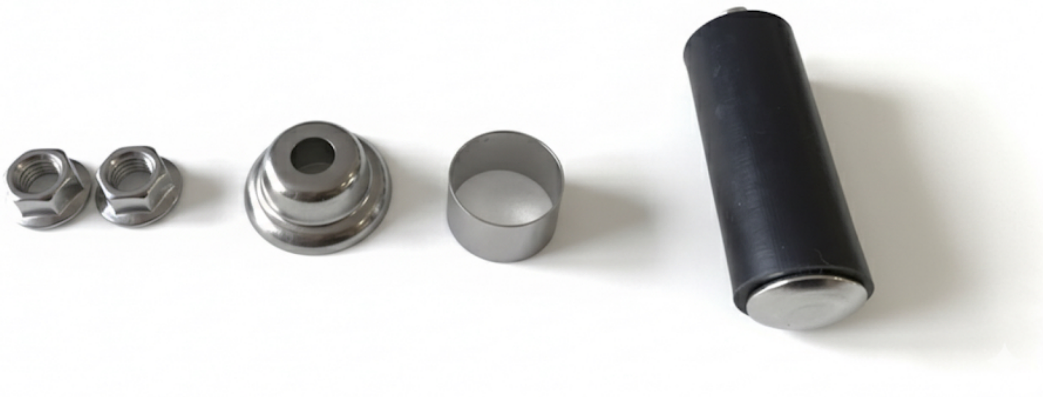
## Assembly Steps

### Step 1: Gather Components



Collect all the components as shown: M10 coach bolt, SolVe seal, SolVe collar, SolVe cap, and flange nuts.

## Step 2: Slide the Seal



Slide the SolVe seal onto the M10 coach bolt. The bolt needs a head for the seal to react off as it doesn't have a rafter to compress against.

## Step 3: Add the Collar



Slide the collar onto the base. Ensure the collar is above the base of the bolt, leaving a small gap.

## Step 4: Complete Assembly



The SolVe Fix is now assembled and ready for installation.

## Installation

1. Insert the SolVe Fix into the hole, holding the cap above the roof covering.
2. Tighten the nut to compress the seal and create the watertight IPx8-rated seal.
3. Ensure the top nut cannot become loose over time by either:
  - Using thread-locking compound (Loctite), or
  - Using the second flange nut and locking them together

**' Watertight IPX8 Seal Complete**

MCS & BBA Certified | Full Depth Protection

SolVe Innovations Ltd | [info@solveshop.co.uk](mailto:info@solveshop.co.uk) | Tel: 01202 028630